

BTEC National Extended Certificate in Health and Social Care Level 3

Activities

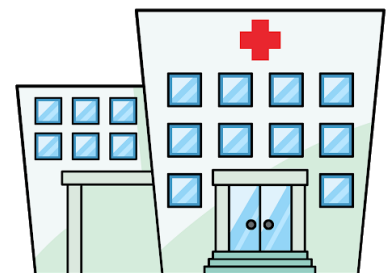
You are now in charge of staff training at Kings Mill Hospital. You need to make sure staff are fully trained in supporting individuals in a caring manner. You have been tasked with creating a PowerPoint, booklet, handout or leaflet, on the principles of care in health and social care and the six C's.

The principles of care are:

- Promoting effective communication and relationships
- Promoting anti-discriminatory practice (including policies and codes of practice)
- Maintaining confidentiality of information
- Promoting and supporting individuals' rights to dignity, independence, empowerment, choice and safety.
- Acknowledging individuals' personal beliefs and identity and respecting diversity
- Protecting individuals from abuse
- Providing individualised care

The six C's are:

1. Care
2. Compassion
3. Commitment
4. Competence
5. Courage
6. Communication



Extra:

Watch and research the 'Winterbourne View Scandal' – are these people being treated using the principles of care and following the six C's?

<https://www.youtube.com/watch?v=KAUkzWFFdqQ>

Write an essay answering the question.

Contact:

You can email Mr Franklin if you have any questions regarding the course or this task before the end of term.

James.franklin@ashfield.notts.sch.uk